

AVALIANDO OS MEIOS DE IMPLEMENTAÇÃO DO ODS 6 ATRAVÉS DE EVIDÊNCIAS LIMITADAS

Guillaume Baggio

United Nations University Institute for Water, Environment and Health (UNU-INWEH)
Canada

2ª Reunião Preparatória da CPLP
9 Outubro 2020



UNITED NATIONS
UNIVERSITY

UNU-INWEH

Institute for Water,
Environment and Health

STATUS ATUAL DO ODS 6

Relatório de Síntese do ODS 6 (Julho 2018)

confirma que:

- Os países estão atrasados no cumprimento do ODS 6.
- Menos da metade dos Estados Membros da ONU têm dados comparáveis disponíveis sobre o cumprimento das metas do ODS 6.
- Abordagens “*Business as usual*” indicam que o ODS 6 não será cumprido em 2030.
- **Faltam ferramentas relacionadas aos meios de implementação (ODS 6.a e 6.b) para avaliar as metas e indicadores do ODS 6.**



http://www.unwater.org/publication_categories/sdg-6-synthesis-report-2018-on-water-and-sanitation/



UNITED NATIONS
UNIVERSITY

UNU-INWEH

Institute for Water,
Environment and Health

MEIOS DE IMPLEMENTAÇÃO PARA O ODS 6

- Os meios de implementação desenvolvidos anteriormente à adoção da Agenda 2030 para o Desenvolvimento Sustentável podem não ser adequados ou suficientes para o cumprimento do ODS 6.
- Nesse contexto, meios de implementação precisam ser realinhados e fortalecidos para responder aos desafios e as ambições do ODS 6.
- No entanto, dados sobre os meios de implementação para o ODS 6 podem ainda estar **ausentes, fragmentados ou desconhecidos**.
- Para que os países alcancem o ODS 6 até 2030, eles precisam avaliar sua situação nacional atual, compreendendo e definindo **lacunas e debilidades** e abordando-as com **políticas viáveis**.



UNITED NATIONS
UNIVERSITY

UNU-INWEH

Institute for Water,
Environment and Health

MAIS DADOS, MELHORES DECISÕES?

- Todos os dias, os governos estaduais tomam decisões que afetam a vida de seus cidadãos. Legisladores e governadores determinam quais políticas promulgar e quais problemas públicos devem ser resolvidos.
- Para servir efetivamente ao público, todos os níveis de governo têm a tarefa de garantir que essas decisões diárias sejam prudentes e bem informadas.
- Nesse entendimento, a formulação de políticas baseadas em dados permitiria um debate público mais racional e sistêmico sobre questões relacionadas ao ODS 6.
- **Mas os dados por si só não são suficientes.** As evidências necessárias para o avanço do ODS 6 precisam ser **adequadas aos processos de tomada de decisão.**



UNITED NATIONS
UNIVERSITY

UNU-INWEH

Institute for Water,
Environment and Health

DESENVOLVIMENTO DO SSP-ODS

- Entre 2016 e 2018, UNU-INWEH e UNOSD em parceria com o Ministério do Meio Ambiente da República da Coreia, K-eco e organizações nacionais de Gana, Tunísia, Paquistão e Costa Rica investigaram:
 - Formas de apoio à tomada de decisões em situações onde dados sobre os meios de implementação do ODS 6 são limitados.
 - Maneiras de fomentar a colaboração entre diferentes setores baseadas na produção de evidências para o ODS 6.
- A equipe do projeto desenvolveu uma ferramenta: o **Sistema de Suporte às Políticas do ODS 6 (SSP-ODS)**.



UNITED NATIONS
UNIVERSITY

UNU-INWEH

Institute for Water,
Environment and Health

SISTEMA DE SUPORTE ÀS POLÍTICAS DO ODS 6

- O SSP-ODS é uma ferramenta online onde países podem inserir dados e traduzi-los em evidências para o ODS 6.
- A ferramenta é organizada em torno de seis componentes críticos para os meios de implementação do ODS 6 e conta também com um componente 'Status'.



UNITED NATIONS
UNIVERSITY

UNU-INWEH

Institute for Water,
Environment and Health

COMPONENTES CRÍTICOS DO SSP-ODS

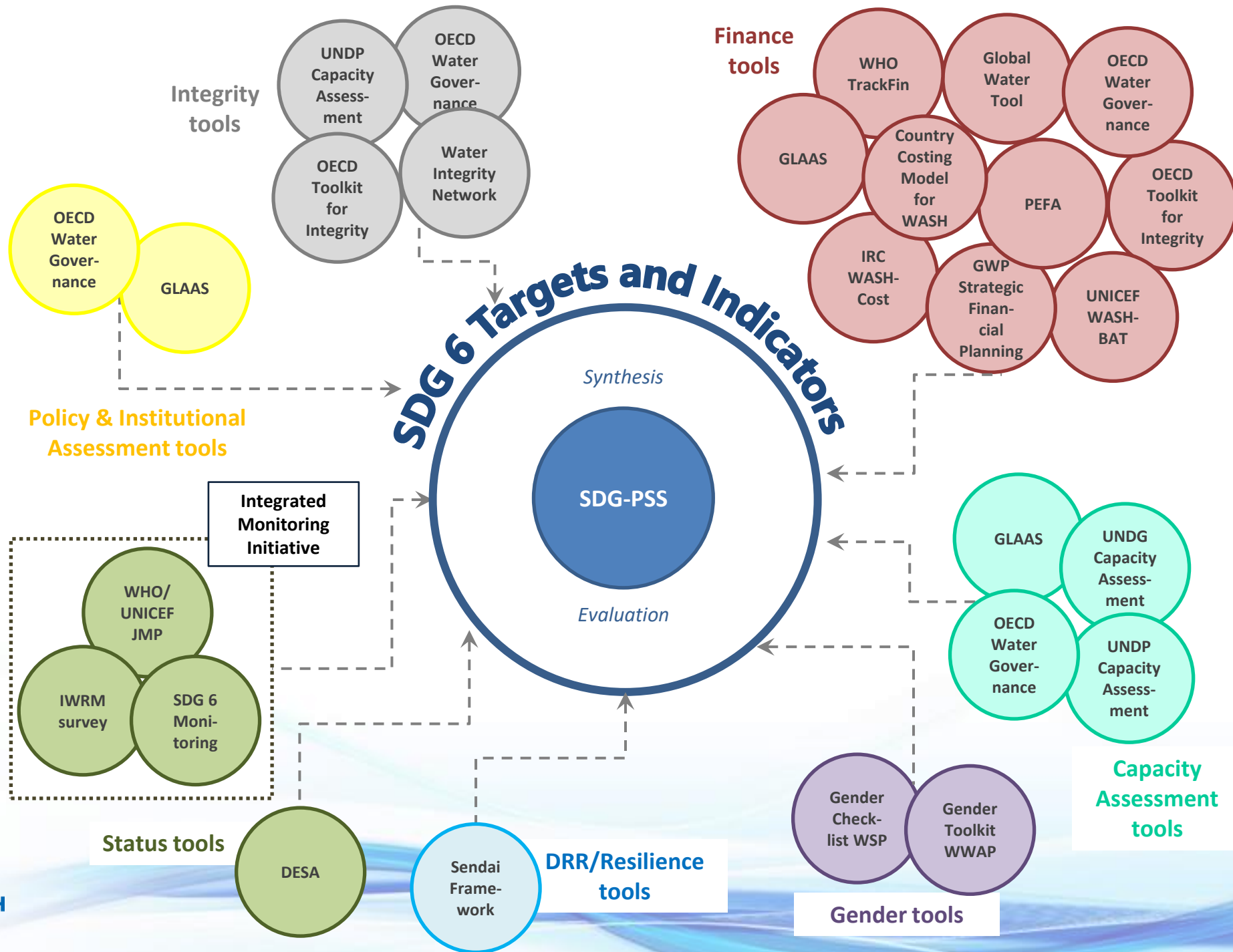
- Os componentes críticos do SSP-ODS foram identificados usando dois critérios principais:
 - Primeiramente, por sua capacidade de encorajar a criação de ambientes nacionais propícios à implementação do ODS 6.
 - E, em segundo lugar, se o componente é suportado por pelo menos uma ferramenta, sistema ou estrutura desenvolvida por um organismo internacional.



UNITED NATIONS
UNIVERSITY

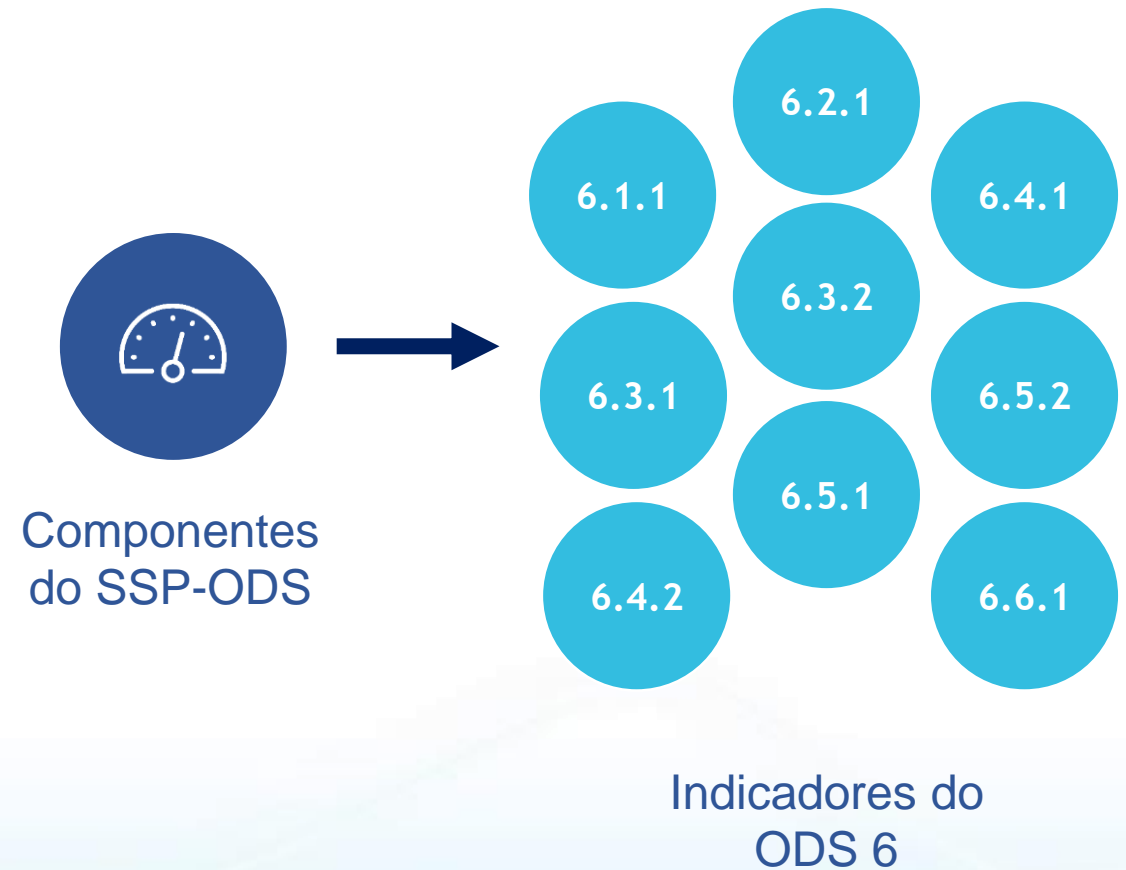
UNU-INWEH

Institute for Water,
Environment and Health



SISTEMA DE SUPORTE ÀS POLÍTICAS DO ODS 6

- O SDG-PSS visa produzir evidências sobre os meios de implementação para cada indicador do ODS 6.



UNITED NATIONS
UNIVERSITY

UNU-INWEH

Institute for Water,
Environment and Health

FUNCIONAMENTO DO SSP-ODS

1. Dados e informação



Objectifs de développement durable liés à l'eau
Capacités - Questionnaire

Questionnaire Rapport

Les réponses à ce questionnaire permettront au SAD-ODD de présenter une perspective globale des priorités, des besoins et des lacunes en matière de politiques liées à l'eau. La clé pour répondre à ce questionnaire est une discussion sur les réponses données par les différentes autorités nationales responsables pour le SAD-ODD. De plus, étant donné que les cibles et les indicateurs de l'ODD 6 couvrent différents aspects liés à l'eau, les professionnels de différentes agences et organisations peuvent répondre à une série de questions en fonction d'une cible ou indicateur spécifique de l'ODD 6. Dans d'autres cas, une seule personne responsable de remplir le questionnaire pour cette composante devra collaborer avec d'autres professionnels dans le pays pour entrer les réponses dans le questionnaire. En tout cas, l'approche et le processus doivent être discutés et décidés entre tous les partenaires intéressés par l'utilisation du SAD-ODD à l'échelle nationale.

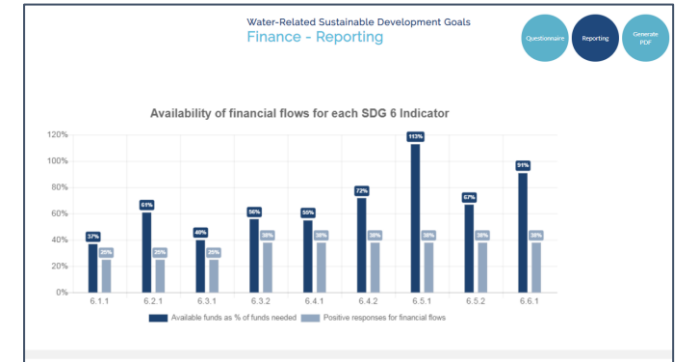
Ce questionnaire est organisé systématiquement. Cependant, la saisie de données peut être longue et complexe. En bas de la page, un bouton permet à l'utilisateur de sauvegarder les réponses déjà entrées dans le questionnaire.

Pour plus d'informations et une description de cette composante, veuillez consulter le Guide de l'utilisateur.

Cible 6.1: Assurer à tous un accès universel et équitable à une eau potable salubre et d'un coût abordable

Indicateur 6.1.1 Pourcentage de la population utilisant des services d'eau potable gérés en toute sécurité

	Non important	Un peu important	Significativement important	Très important
a. Ressources Humaines et compétences	<input type="radio"/>	<input type="radio"/>	<input type="radio"/>	<input checked="" type="radio"/>
b. Connaissance et données	<input type="radio"/>	<input type="radio"/>	<input type="radio"/>	<input checked="" type="radio"/>
c. Cadres politiques cohérents	<input type="radio"/>	<input type="radio"/>	<input type="radio"/>	<input checked="" type="radio"/>
d. Cadres juridiques, réglementation et application	<input type="radio"/>	<input type="radio"/>	<input type="radio"/>	<input checked="" type="radio"/>
e. Science, technologie et innovation bien financées	<input type="radio"/>	<input type="radio"/>	<input type="radio"/>	<input checked="" type="radio"/>
f. Partenariats - donateurs, privés et autres	<input type="radio"/>	<input type="radio"/>	<input type="radio"/>	<input checked="" type="radio"/>



Target	Indicator	Capacity			Finance			Policy & Institutional					
		Current capacity	Strengthening mechanisms	Current progress	Adequacy of financial flows	Funding sources	Financing for quality	Accountability	Policy for equity	Coordination & cooperation	Awareness		
6.1	By 2030, achieve universal and equitable access to safe and affordable drinking water for all	6.1.1	Proportion of population using safely managed drinking water service	Significant	Adequate	Adequate	Inadequate	Inadequate	Inadequate	Inadequate	No evidence	Inadequate	Inadequate
6.2	By 2030, achieve access to adequate and equitable sanitation and hygiene for all and reduce open defecation, paying special attention to the needs of women and girls and those in vulnerable situations	6.2.1	Proportion of population using safely managed sanitation services, including a hand-washing facility with soap and water	Adequate	Inadequate	Inadequate	Adequate	Inadequate	Inadequate	Inadequate	No evidence	Inadequate	Inadequate
6.3	By 2030, improve water quality by reducing pollution, eliminating dumping and minimizing release of hazardous chemicals and materials, halving the proportion of untreated wastewater and substantially increasing recycling and safe reuse globally	6.3.1	Proportion of wastewater safely treated	Adequate	Adequate	Adequate	Inadequate	Adequate	Inadequate	Adequate	No evidence	Inadequate	Inadequate
6.3	By 2030, protect and restore water-related ecosystems, including mountains, forests, wetlands, rivers, freshwaters and coastal wetlands	6.3.2	Proportion of bodies of water with good ambient water quality	Significant	Inadequate	Inadequate	Adequate	Adequate	Inadequate	Inadequate	No evidence	Inadequate	Inadequate
6.4	By 2030, substantially increase water-use efficiency across all sectors and ensure sustainable withdrawals and equity of freshwater to address water scarcity and substantially reduce the number of people suffering from water scarcity	6.4.1	Change in water-use efficiency over time	Adequate	Inadequate	Adequate	Adequate	Adequate	Inadequate	Inadequate	No evidence	Inadequate	Inadequate
6.4	By 2030, substantially increase water-use efficiency across all sectors and ensure sustainable withdrawals and equity of freshwater to address water scarcity and substantially reduce the number of people suffering from water scarcity	6.4.2	Level of water stress: freshwater withdrawal as a proportion of available freshwater resources	Significant	Inadequate	Significant	Adequate	Adequate	Inadequate	Adequate	No evidence	Inadequate	Inadequate
6.5	By 2030, implement integrated water resources management at all levels, including through transboundary cooperation as appropriate	6.5.1	Degree of integrated water resources management implementation (0-100)	Adequate	Inadequate	Inadequate	Significant	Adequate	Inadequate	Inadequate	No evidence	Inadequate	Inadequate
6.5	By 2030, implement integrated water resources management at all levels, including through transboundary cooperation as appropriate	6.5.2	Proportion of transboundary basin areas with operational arrangements for water cooperation	Significant	Inadequate	Inadequate	Adequate	Adequate	Inadequate	Significant	No evidence	Inadequate	Inadequate
6.6	By 2030, protect and restore water-related ecosystems, including mountains, forests, wetlands, rivers, freshwaters and coastal wetlands	6.6.1	Change in the extent of water-related ecosystems over time	Adequate	Inadequate	Adequate	Adequate	Adequate	Inadequate	Adequate	No evidence	Inadequate	Inadequate

2. Questionários

3. Relatórios

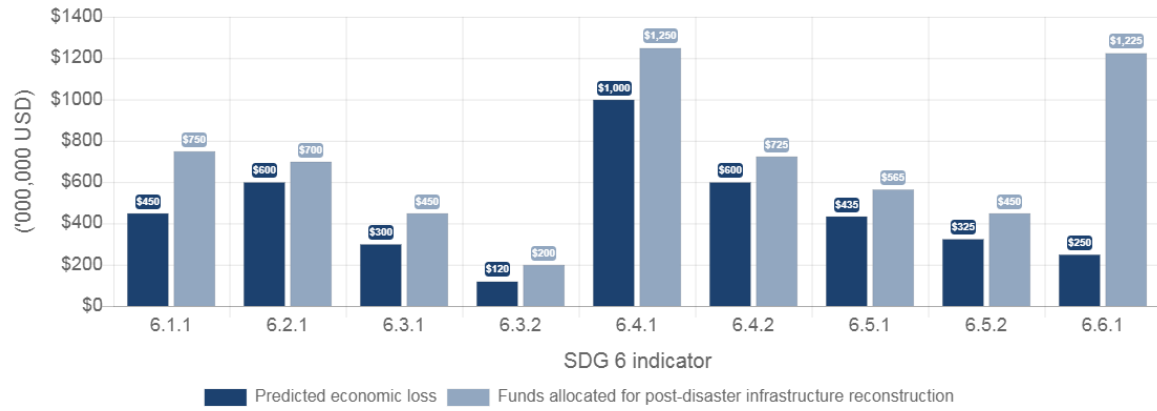


UNITED NATIONS
UNIVERSITY

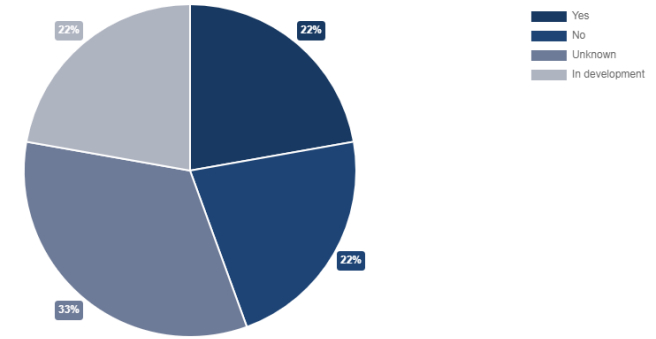
UNU-INWEH

Institute for Water,
Environment and Health

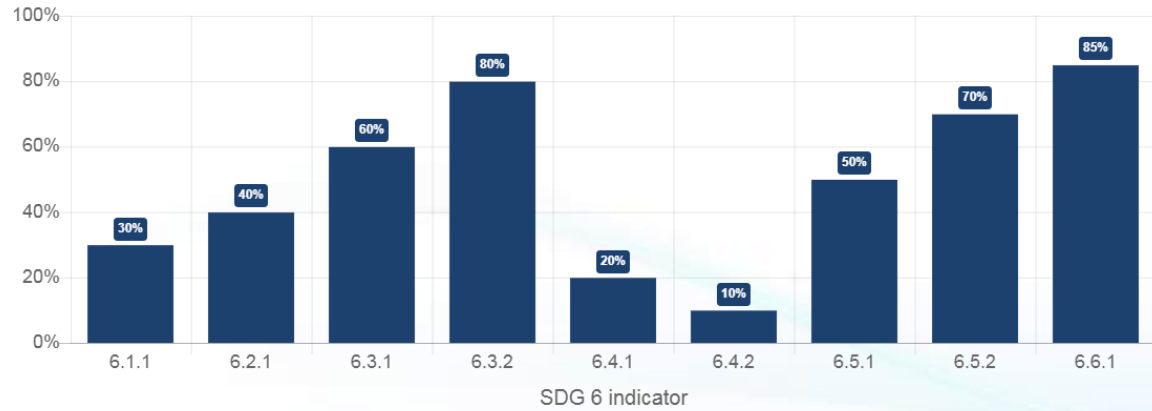
Predicted economic loss and funds allocated to address infrastructure reconstruction for each indicator



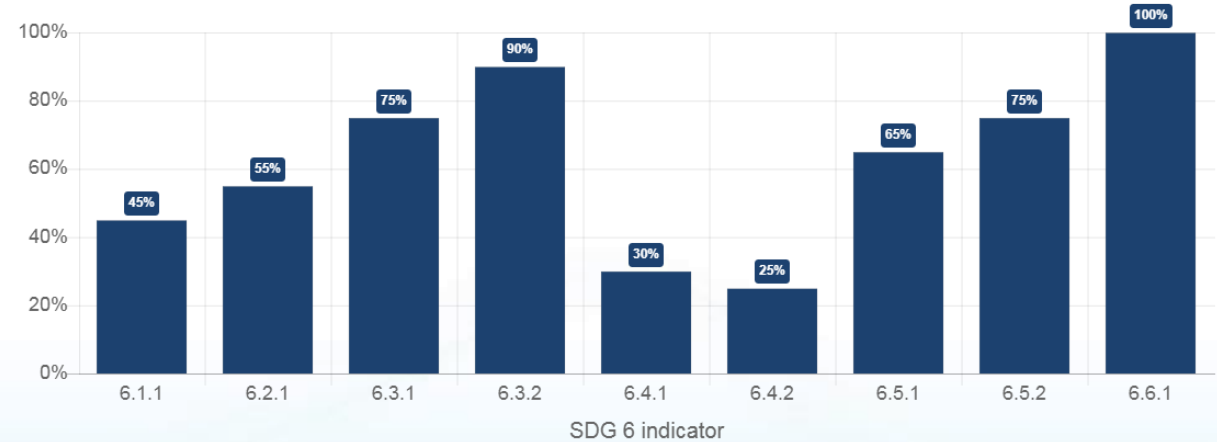
Protection plans implemented for critical infrastructure for achieving SDG 6



Proportion of critical public infrastructure located in disaster risk areas related to each SDG 6 indicator



Proportion of critical public infrastructure with hazard, risk and vulnerability analysis already completed for each SDG 6 indicator



UNITED NATIONS
UNIVERSITY

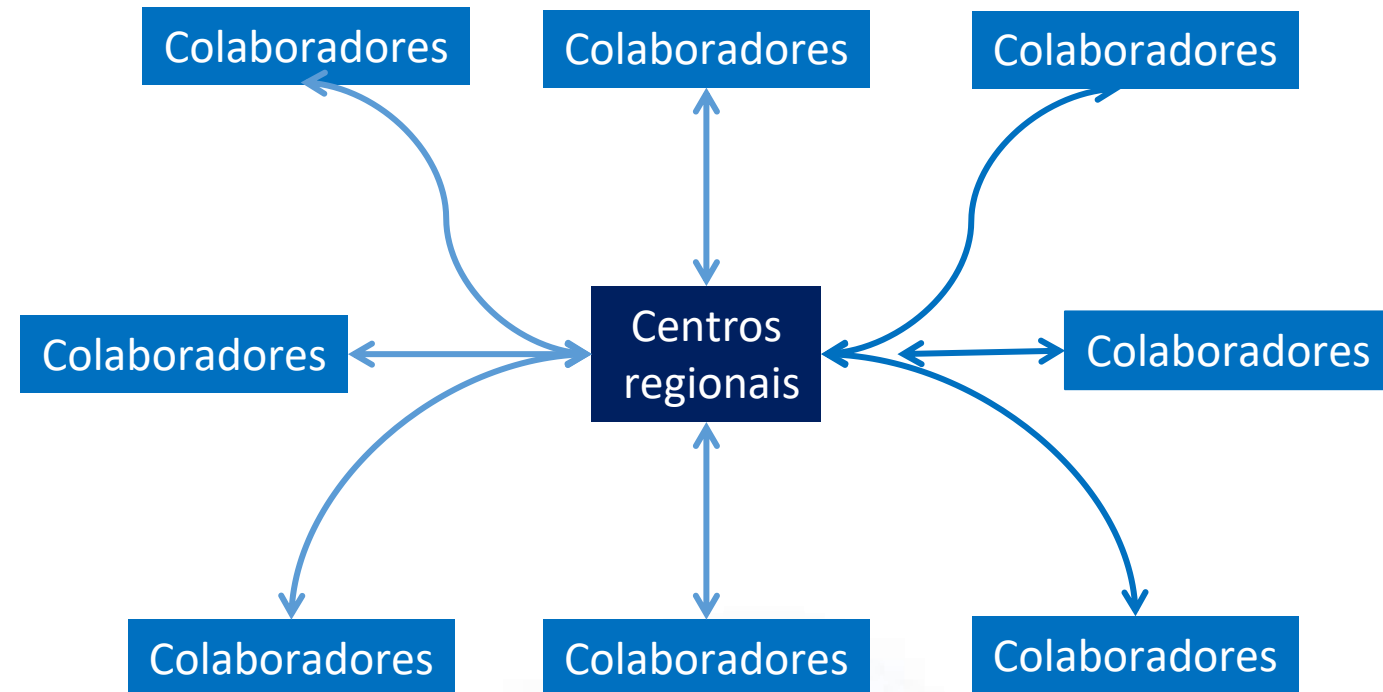
UNU-INWEH

Institute for Water,
Environment and Health

Target			Indicator			Capacity			Finance				Policy & Institutional		
						Overall current capacity	Strengthening mechanisms	Overall Progress	Adequacy of financial flows	Funding Sources	Financing for equity	Accountability	Policy for equity	Coordination & cooperation	Awareness
6.1	By 2030, achieve universal and equitable access to safe and affordable drinking water for all	6.1.1	Proportion of population using safely managed drinking water services	Significant	Adequate	Adequate	Inadequate	Inadequate	Inadequate	Inadequate	No evidence	Inadequate	Inadequate		
6.2	By 2030, achieve access to adequate and equitable sanitation and hygiene for all and end open defecation, paying special attention to the needs of women and girls and those in vulnerable situations	6.2.1	Proportion of population using safely managed sanitation services, including a hand-washing facility with soap and water	Adequate	Inadequate	Inadequate	Adequate	Inadequate	Inadequate	Inadequate	No evidence	Inadequate	Inadequate		
6.3	By 2030, improve water quality by reducing pollution, eliminating dumping and minimizing release of hazardous chemicals and materials, halving the proportion of untreated wastewater and substantially increasing recycling and safe reuse globally	6.3.1	Proportion of wastewater safely treated	Adequate	Adequate	Adequate	Inadequate	Adequate	Inadequate	Adequate	No evidence	Inadequate	Inadequate		
		6.3.2	Proportion of bodies of water with good ambient water quality	Significant	Inadequate	Inadequate	Adequate	Adequate	Inadequate	Inadequate	No evidence	Inadequate	Inadequate		
6.4	By 2030, substantially increase water-use efficiency across all sectors and ensure sustainable withdrawals and supply of freshwater to address water scarcity and substantially reduce the number of people suffering from water scarcity	6.4.1	Change in water-use efficiency over time	Adequate	Inadequate	Adequate	Adequate	Adequate	Inadequate	Inadequate	No evidence	Inadequate	Inadequate		
		6.4.2	Level of water stress - freshwater withdrawal as a proportion of available freshwater resources	Significant	Inadequate	Significant	Adequate	Adequate	Inadequate	Adequate	No evidence	Inadequate	Inadequate		
6.5	By 2030, implement integrated water resources management at all levels, including through transboundary cooperation as appropriate	6.5.1	Degree of integrated water resources management implementation (0-100)	Adequate	Inadequate	Inadequate	Significant	Adequate	Inadequate	Inadequate	No evidence	Inadequate	Inadequate		
		6.5.2	Proportion of transboundary basin area with an operational arrangement for water cooperation	Significant	Inadequate	Inadequate	Adequate	Adequate	Inadequate	Significant	No evidence	Inadequate	Inadequate		
6.6	By 2020, protect and restore water-related ecosystems, including mountains, forests, wetlands, rivers, aquifers and lakes	6.6.1	Change in the extent of water-related ecosystems over time	Adequate	Inadequate	Adequate	Adequate	Adequate	Inadequate	Adequate	No evidence	Inadequate	Inadequate		

SSP-ODS EM 2019-2020 E PRÓXIMAS ETAPAS

- Envolvimento de mais países: cerca de 34 países através dos workshops regionais.
- Desenvolvimento de um curso online para SSP-ODS.
- Feedback dos países atualmente usando a ferramenta.
- **Workshop final** da fase atual em Novembro 2020.
- Preparação para a **próxima fase** do projeto em **2021-2022**.



UNITED NATIONS
UNIVERSITY

UNU-INWEH

Institute for Water,
Environment and Health

SDG 6 Policy Support System (SDG-PSS)

SDG-PSS is designed as part of the project 'Water in the World We Want' to enable government actors and stakeholders to better collaborate to create national-level evidence around SDG 6, its targets and indicators.

sdgpss.net



UNITED NATIONS
UNIVERSITY

UNU-INWEH

Institute for Water,
Environment and Health



Korea Environment
Corporation



Ministry of
Environment



United Nations Office for
Sustainable Development
Incheon · ROK